



7th June 2018

Dear Parents and Carers

Outcome of the Pastoral Review

It must feel like a very long time ago that we conducted the review of our Pastoral structures. In education, such things can appear to change very slowly, but behind the scenes we have been working tirelessly on ensuring we had an improved way to move forward and that the school budget could afford it.

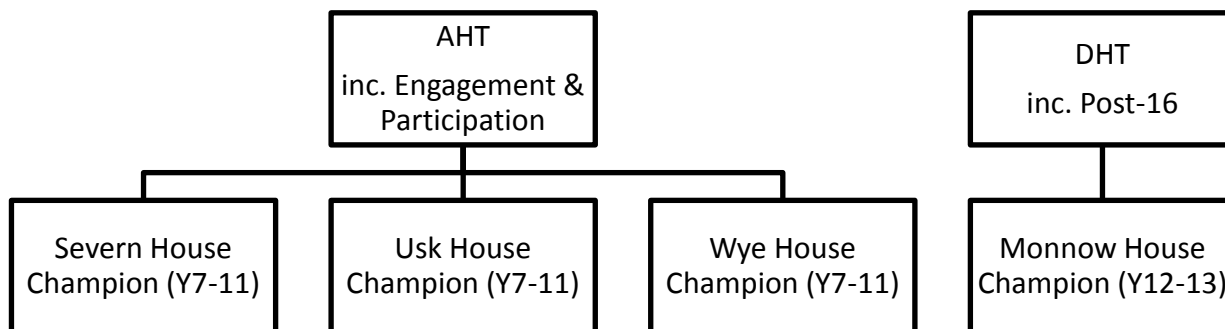
I am pleased to let you know that we are now in a position to confirm these changes with you. Some of the changes we will be able to introduce immediately, others will be in place for September. Regardless, we have listened to everything you had to say, we spoke to the children themselves, we visited other schools and also consulted with staff – we are confident that this will improve the care your children receive at Chepstow School.

At the moment we organise our pastoral care into four Houses with one House Leader responsible for the students in that House. From September this will change and instead your child's initial pastoral care will be the responsibility of a Year Leader instead.

House System

We plan to retain our House system – but use it purely for engagement, rewards and competition. Each House will have a Staff Champion to encourage all students to participate in the wider curriculum, enrichment opportunities, sports clubs, etc.

Students in Years 7 to 11 will remain in their current Houses with new Champions. These House Champions will be overseen by an Assistant Headteacher who will lead on Engagement and Participation. Sixth Form students will remain separate as part of Monnow House.



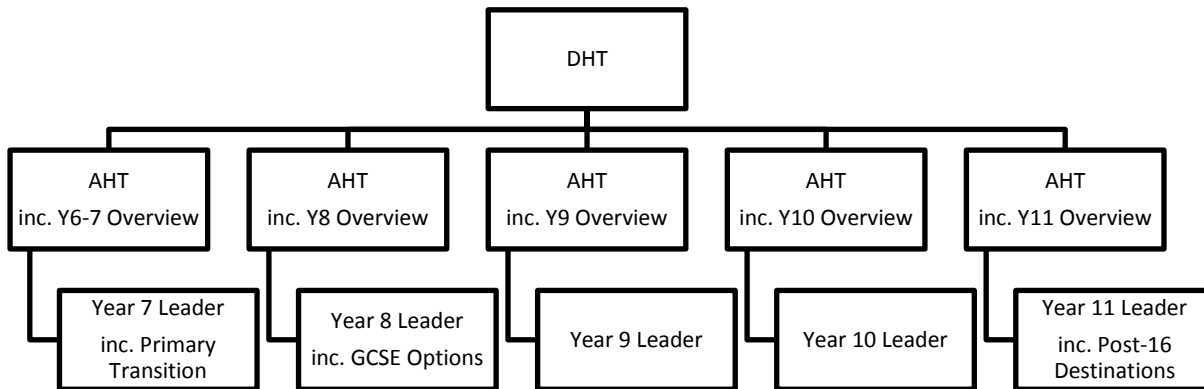


New Pastoral Structure for Students in Years 7 to 11

From September there will be a Year Leader for each year group. The key roles of the Year Leader are to support all students to achieve expected or above expected outcomes; support all students to demonstrate respect for themselves and each other; support all students to have attendance above 96%; support all students to be independent, resilient and confident individuals and to lead a team of Year Tutors to fulfil this vision.

In addition, each Year Leader will be line managed by one of the school’s Assistant Headteachers, who in turn will be line managed by Mrs Lindley our new Deputy Headteacher. This should create a consistent approach for every year group and that all students feel they have an equality of provision.

These are the staff that parents and carers should approach in the first instance should you have any problems such as overall academic progress, mental or physical health worries, behaviour, attendance, bullying, etc. Current House Leaders Mr Robson and Ms Back will transfer to become Year Leaders and we are recruiting three new Year Leaders internally. We will be confirming which members of staff have been allocated to each year group as soon as we can.



New Pastoral Structure for Students in Years 12 and 13

As many of you will know Mr Price, Deputy Headteacher, took over responsibility for the Sixth Form this Easter. This will continue into the next academic year. In addition, he will be supported by Ms Gosling as Deputy Head of 6th form.

I hope that you will find these new arrangements an improvement and that your children will be better supported and nurtured whilst at the school.

Yours sincerely,

Ms Claire Price
Headteacher